



LEARN
FROM
THE
BEST

10th October 2008

www.bfe.org



Who Are We...

**The Biofeedback
Foundation of
Europe**

**A non-profit
organization located
in the Netherlands**

www.bfe.org

Advisory Board Members

Erik Peper, Ph.D. (USA)

Paolo Di Benedetto, MD (Italy)

Niels Birbaumer, Ph.D. (Germany)

Carmen Clot, Ph.D. (Spain)

Monika Fuhs, Mag. rer. nat. (Austria)

Daniel Hamiel, Ph.D. (Israel)

Daniëlle Matto, drs. (The Netherlands))

Ralph Sztembis, MD, PhD. (Poland)



Who Are Our Sponsors...

- Medical Device Manufacturers
- Medical Device Distributors
- Other Corporate Sponsors
- Non-Profit Sponsors



Three Goals

1. Education

2. Training

3. Research

IREP TEAMS

18 People,
3 Circles

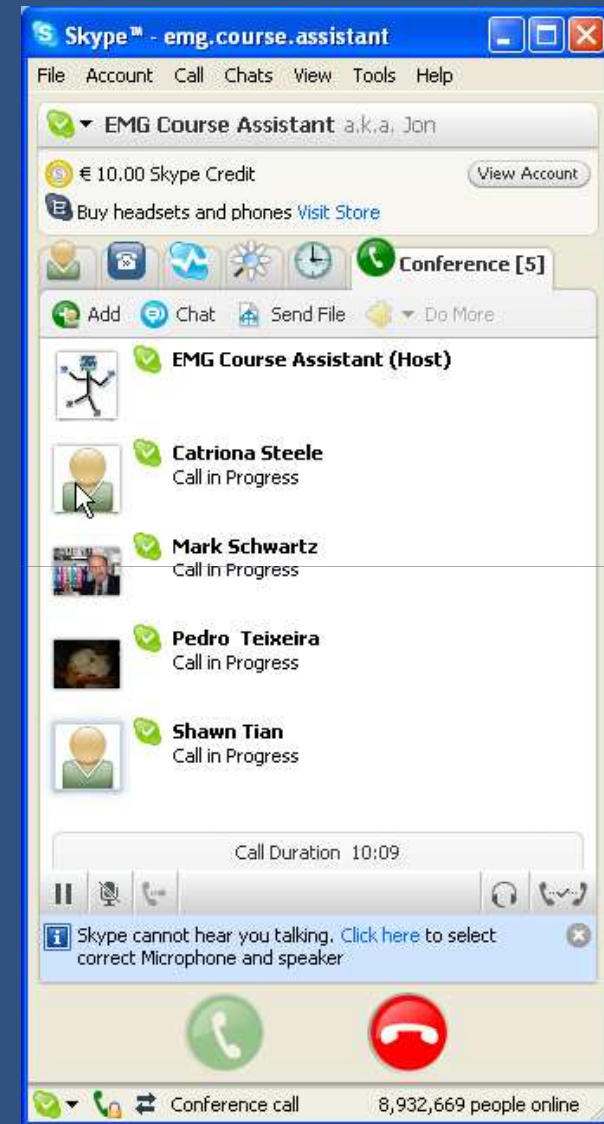
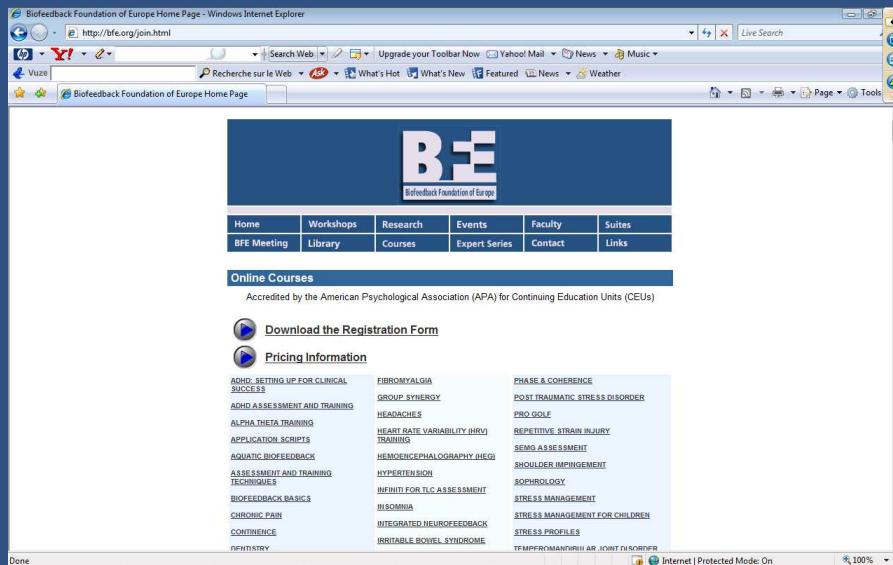
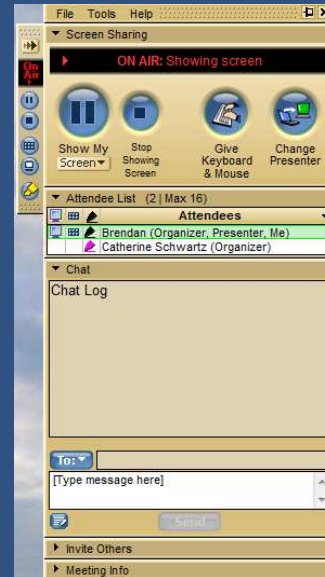


INTERNATIONAL RESEARCH & EDUCATION PROJECT (IREP)	
 www.bfe.org	
TEAM GUIDE	
INTERNATIONAL RESEARCH & EDUCATION PROJECT (IREP)	
BACKGROUND	The Biomedica Foundation (BFE) is a non-profit foundation located in the Netherlands. The BFE supports past research studies through the creation of International Research & Education Project (IREP) teams. The Foundation is entirely supported by gifts and donations from corporate and non-profit sponsors and from revenues generated by the sale of software, online courses, workshops and conferences.
INTERNATIONAL RESEARCH & EDUCATION PROJECT (IREP) TEAMS	BFE International Research & Education Project (IREP) teams are grouped according to three (3) commonly used biofeedback signal types: surface electromyography (sEMG), electrodermal activity (EDA), also known as neurofeedback, and physiological signals (skin temperature, skin conductance, respiration and heart rate) also known as biofeedback. An IREP team is responsible for the creation of courseware and software used over the internet to record data on specific applications in sEMG, neurofeedback and biofeedback. Each team has six (6) members that are trained to work together in real-time over the internet to create clinical assessment and training protocols.
IREP TEAM GOALS	<ol style="list-style-type: none"> 1. To create real time interactive online education for health professionals 2. To create software and training materials for clinical applications 3. To train, supervise and mentor clinicians and other professionals
TEAM ROLES	1. Sponsor Corporate and Non-profit Sponsors assist IREP teams with
© Biomedica Foundation of BFE 11 Nov 2008	



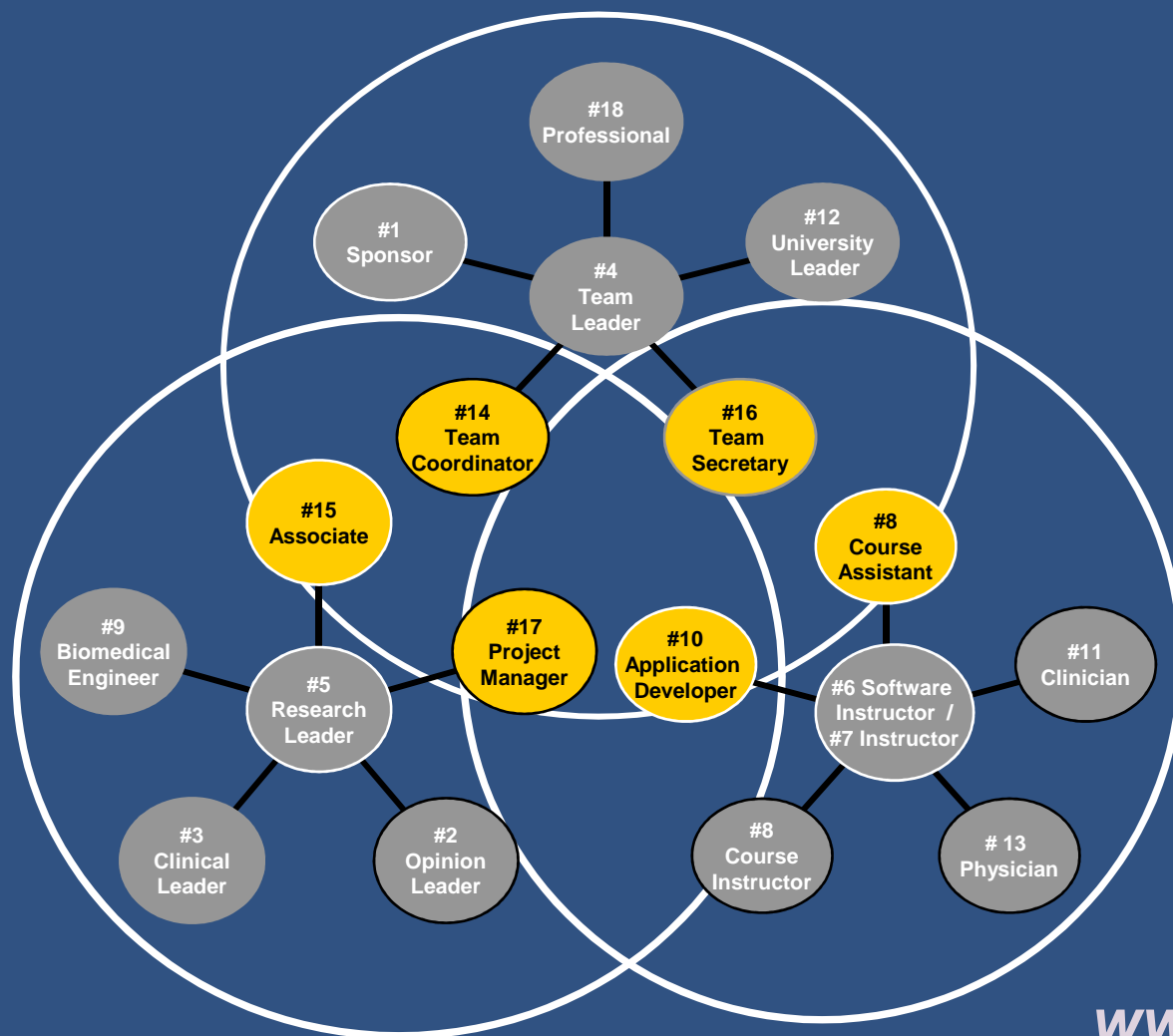
**Real
World
Networking
Opportunities**

REAL TIME ONLINE TRAINING





IREP Team: Eighteen Roles Education-Research-Training





QUESTIONS?

Who to Contact?

Carol Meyers

education@bfe.org

THANK YOU

